

Fiero Door lock / Trunk Release wiring.

Aiuphing 405q Unit from Amazon www.GSFOG.com FB GSFOG

Items Needed:

Door Lock /Unlock Only: Crimp Taps and Pliers

Flash Lights: T15 Torx to remove light switch – 7mm nut driver

Pop Trunk: Standard Relay and T15 Torx for Trunk release switch.

** Flash Lights and Pop Trunk will need about 3 feet of hookup wire each*



Wiring:

405q Unit	to	Fiero Side
Red wire		Orange wire (always on 12v)
Black		Black (Ground)
Yellow (both) / Black Stripe no Stripe		Tap to Red wire of 405Q BEFORE fuse Black Unlock Wire of Relay Light Blue Lock Wire of Relay

Door Lock/Unlock:

All wires can be reached under the passenger Dash

Relay is high up next to chime:

Power taps are behind the carpet in this position

Flash Lights:

Extend brown wire from unit and tap into brown wire behind parking light switch (remove 4 torx Screws)

**it will be easier to run wires if you remove panel under steering wheel BY REMOVING 4 7MM BOLTS **

Trunk Pop:

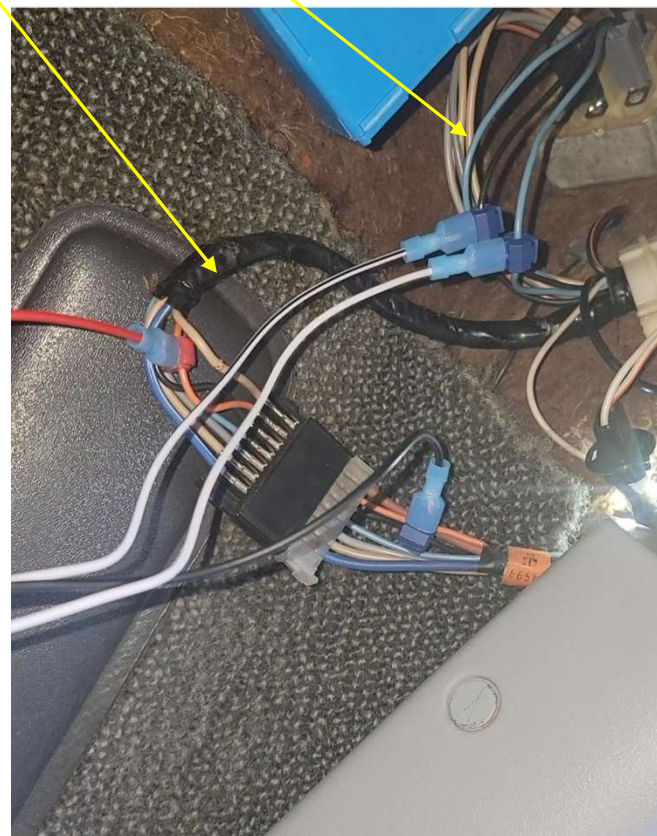
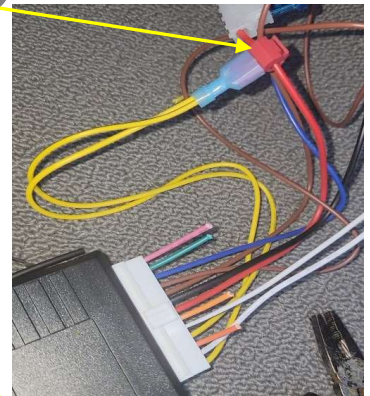
A little more advanced: .

Positive of Relay Coil to ORANGE (always on) #30

Jump Positive of Relay Coil to the Output #86

Blue wire (Trunk release on unit) to #85 (Negative Trigger)

Extend #87 to Yellow Wire on trunk release switch



** Wire the relay close to 405Q Unit
This will create a good ground*

